

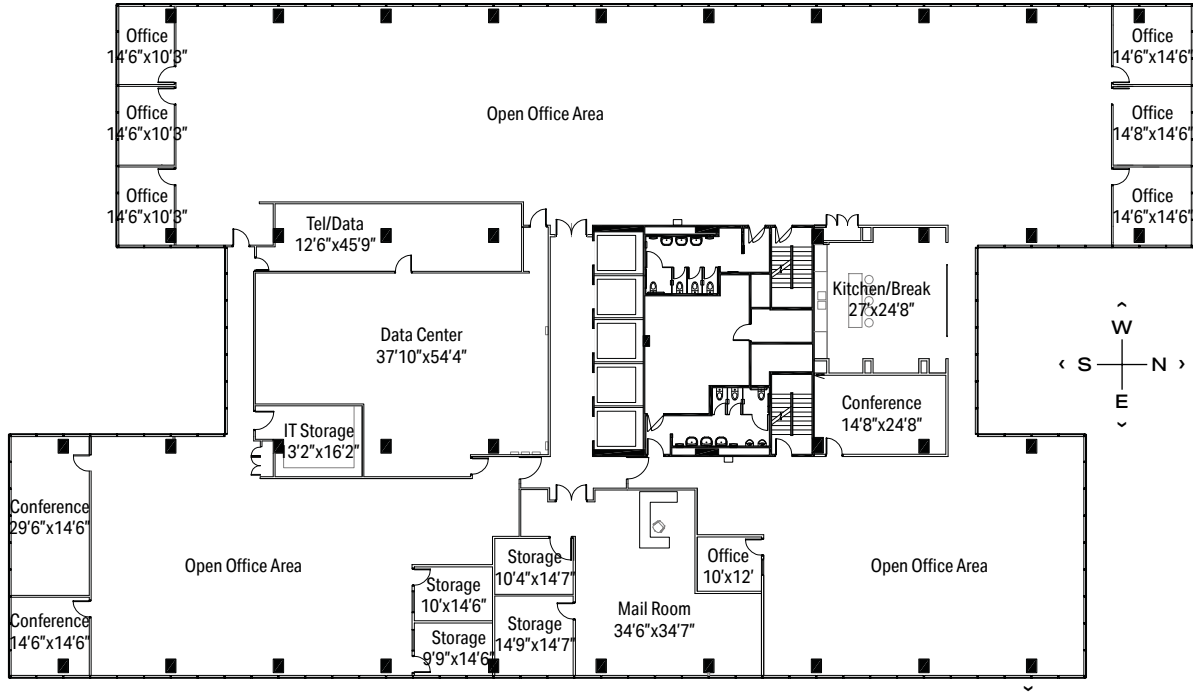


1515 WOODFIELD RD - SUITE 1100

SCHAUMBURG CORPORATE CENTER

24,700 RSF

1475, 1501, 1515 E Woodfield Rd
Schaumburg, IL 60173



[VIRTUAL TOUR →](#)

LEASING

Dave Trumpy
Managing Director
 dtrumpy@glenstar.com
 773.308.1031

—

Bill Saviski
Managing Director
 bsaviski@glenstar.com
 773.837.5290

SchaumburgCorporateCenter.com

PROPERTY HIGHLIGHTS

- Class A amenity package including 17,000 SF atrium
- Complimentary Midtown Athletic Club membership for tenants
- Parking garage with connected pedway and heated executive parking
- Glenstar Connect Program

SUITE FEATURES

- Full floor suite
- Part of a contiguous block up to 98,800 RSF
- Abundant window line with views to the exterior
- Large, light-filled open office areas for workstations



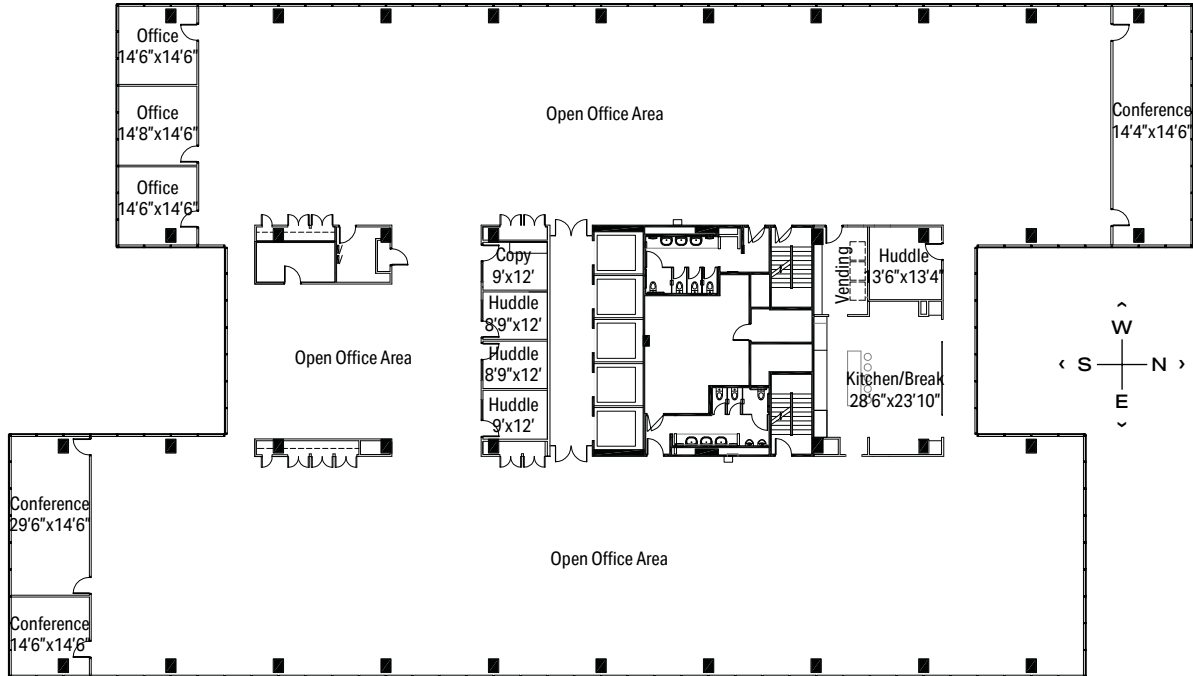


1515 WOODFIELD RD - SUITE 1200

SCHAUMBURG CORPORATE CENTER

24,700 RSF

1475, 1501, 1515 E Woodfield Rd
Schaumburg, IL 60173



[VIRTUAL TOUR →](#)

LEASING

Dave Trumpy
Managing Director
dtrumpy@glenstar.com
773.308.1031

—

Bill Saviski
Managing Director
bsaviski@glenstar.com
773.837.5290

SchaumburgCorporateCenter.com

PROPERTY HIGHLIGHTS

- Class A amenity package including 17,000 SF atrium
- Complimentary Midtown Athletic Club membership for tenants
- Parking garage with connected pedway and heated executive parking
- Glenstar Connect Program

SUITE FEATURES

- Full floor suite
- Part of a contiguous block up to 98,800 RSF
- Abundant window line with views to the exterior
- Large, light-filled open office areas for workstations



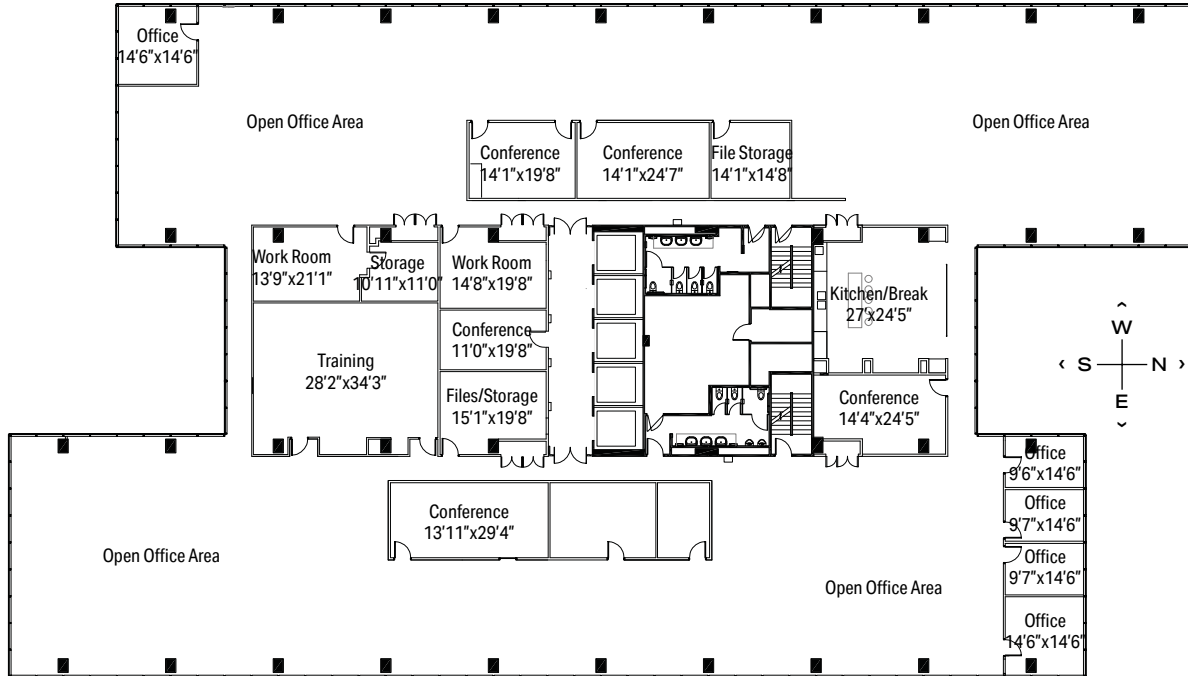


1515 WOODFIELD RD - SUITE 1300

SCHAUMBURG CORPORATE CENTER

24,700 RSF

1475, 1501, 1515 E Woodfield Rd
Schaumburg, IL 60173



[VIRTUAL TOUR →](#)

LEASING

Dave Trumpy
Managing Director
dtrumpy@glenstar.com
773.308.1031

—

Bill Saviski
Managing Director
bsaviski@glenstar.com
773.837.5290

SchaumburgCorporateCenter.com

PROPERTY HIGHLIGHTS

- Class A amenity package including 17,000 SF atrium
- Complimentary Midtown Athletic Club membership for tenants
- Parking garage with connected pedway and heated executive parking
- Glenstar Connect Program

SUITE FEATURES

- Full floor suite
- Part of a contiguous block up to 98,800 RSF
- Abundant window line with views to the exterior
- Large, light-filled open office areas for workstations



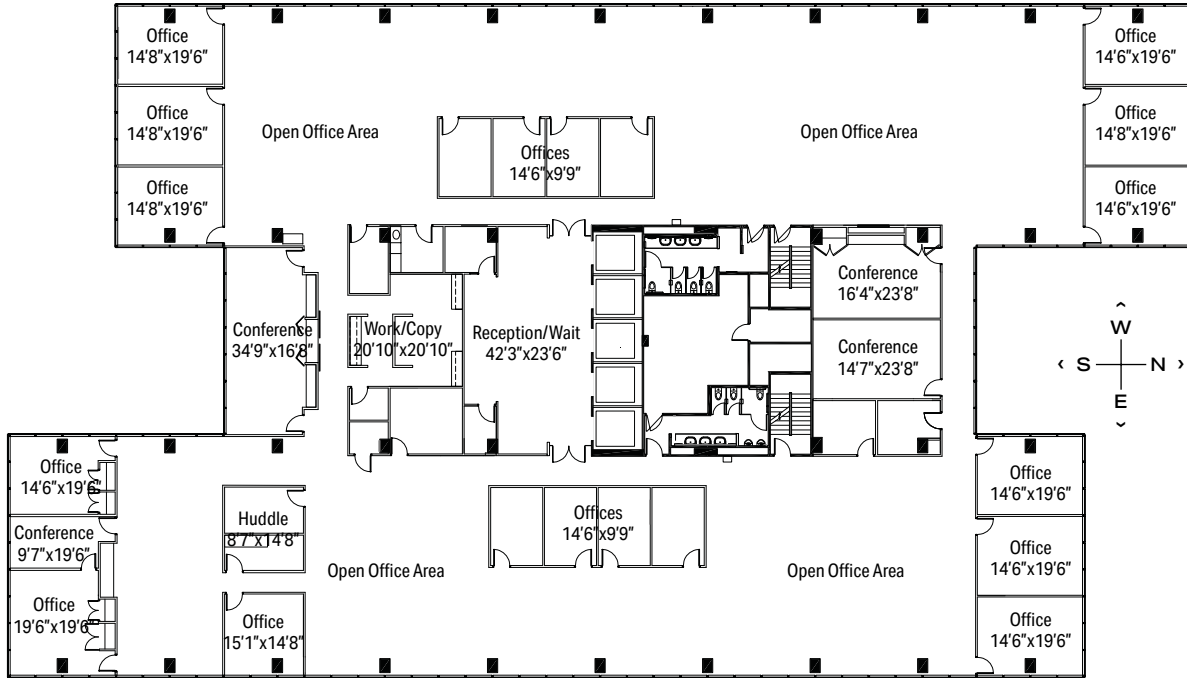


1515 WOODFIELD RD - SUITE 1400

SCHAUMBURG CORPORATE CENTER

24,700 RSF

1475, 1501, 1515 E Woodfield Rd
Schaumburg, IL 60173



[VIRTUAL TOUR →](#)

LEASING

Dave Trumpy
Managing Director
 dtrumpy@glenstar.com
 773.308.1031

—

Bill Saviski
Managing Director
 bsaviski@glenstar.com
 773.837.5290

SchaumburgCorporateCenter.com

PROPERTY HIGHLIGHTS

- Class A amenity package including 17,000 SF atrium
- Complimentary Midtown Athletic Club membership for tenants
- Parking garage with connected pedway and heated executive parking
- Glenstar Connect Program

SUITE FEATURES

- Full floor suite
- Part of a contiguous block up to 98,800 RSF
- Abundant window line with views to the exterior
- Large, light-filled open office areas for workstations

