

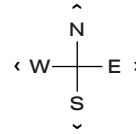
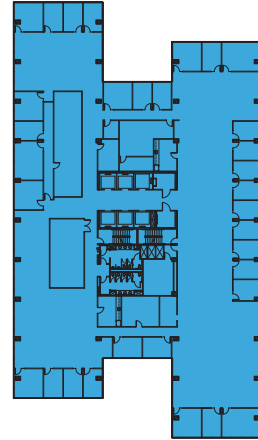
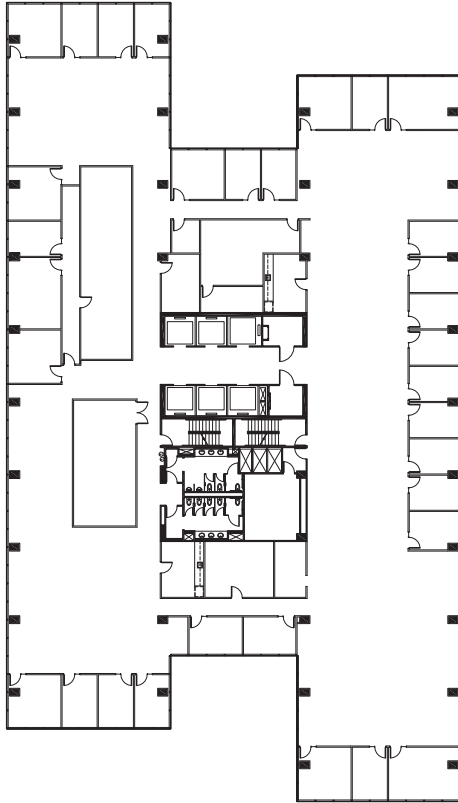


1475 WOODFIELD RD - SUITE 1100

# 23,858 RSF

**SCHAUMBURG CORPORATE CENTER**

1475, 1501, 1515 E Woodfield Rd  
Schaumburg, IL 60173



### LEASING

**Bill Saviski**  
Managing Director

bsaviski@glenstar.com  
773 837 5290

—

**Christian Domin**  
Managing Director

cdomin@glenstar.com  
312 925 6304

SchaumburgCorporateCenter.com

### PROPERTY HIGHLIGHTS

- Class A amenity package including 17,000 SF atrium
- Complimentary health club memberships
- Parking garage with connected pedway and heated executive parking
- Glenstar Connect Program

### SUITE FEATURES

- Full floor
- 3 corner executive offices with exterior views
- 4 conference rooms
- 23 offices with exterior views
- 2 kitchens
- Ample copy/storage space

