

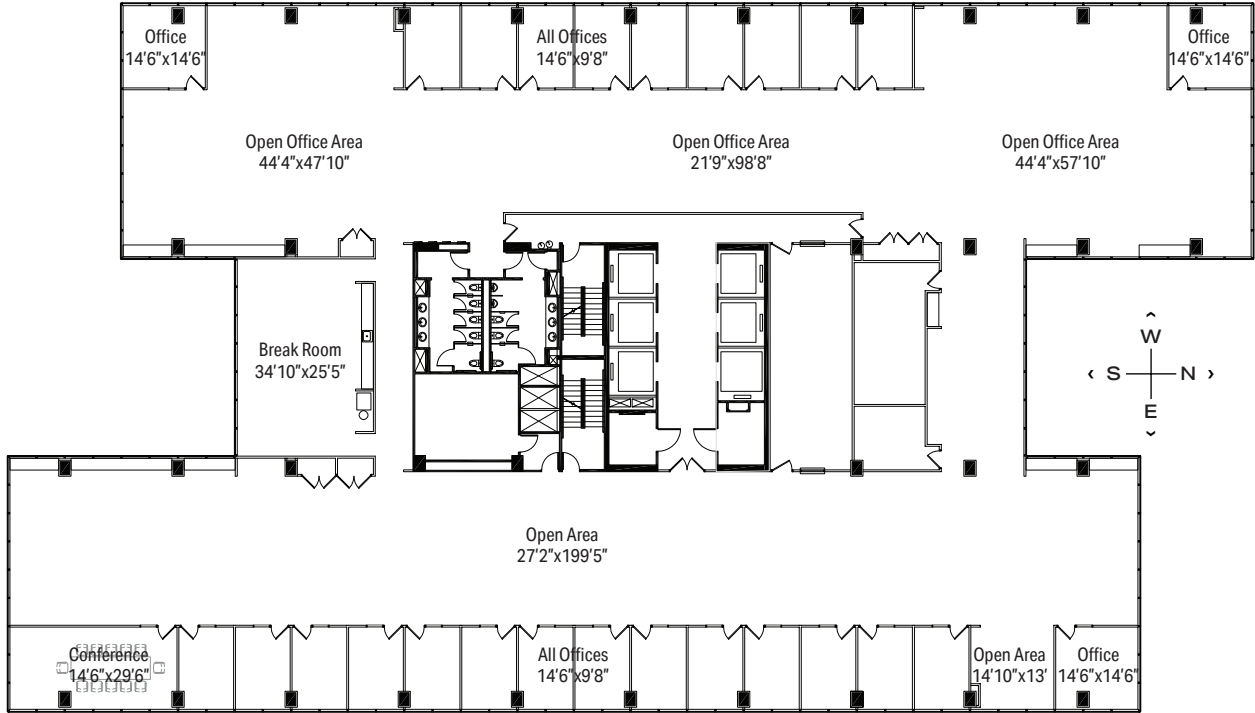


1475 WOODFIELD RD - SUITE 300

SCHAUMBURG CORPORATE CENTER

24,700 RSF

1475, 1501, 1515 E Woodfield Rd
Schaumburg, IL 60173



LEASING

Bill Saviski
Managing Director
 bsaviski@glenstar.com
 773 837 5290

Christian Domin
Managing Director
 cdomin@glenstar.com
 312 925 6304

SchaumburgCorporateCenter.com

PROPERTY HIGHLIGHTS

- Class A amenity package including 17,000 SF atrium
- Complimentary health club memberships
- Parking garage with connected pedway and heated executive parking
- Glenstar Connect Program

SUITE FEATURES

- 26 perimeter offices with exterior views
- Large open office areas for workstations
- 1 conference room
- Kitchen/break room
- Divisible

