

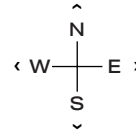
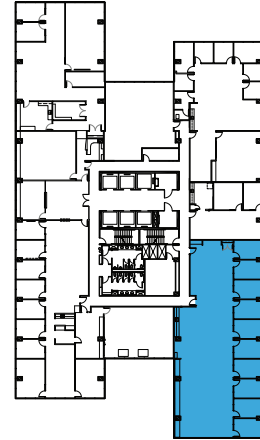
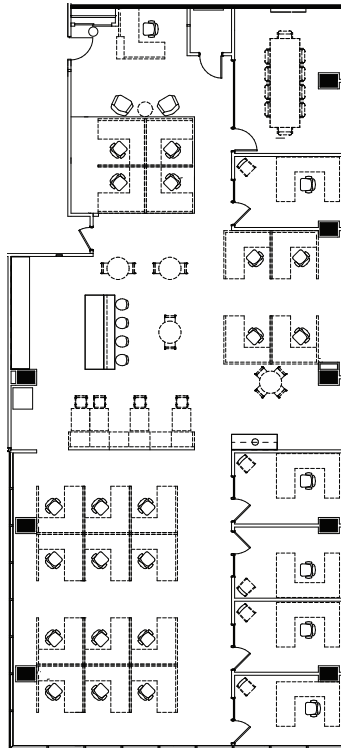


1475 WOODFIELD RD - SUITE 450

5,106 RSF

SCHAUMBURG CORPORATE CENTER

1475, 1501, 1515 E Woodfield Rd
Schaumburg, IL 60173



LEASING

Bill Saviski
Managing Director

bsaviski@glenstar.com
773 837 5290

—

Christian Domin
Managing Director

cdomin@glenstar.com
312 925 6304

SchaumburgCorporateCenter.com

PROPERTY HIGHLIGHTS

- Class A amenity package including 17,000 SF atrium
- Complimentary health club memberships
- Parking garage with connected pedway and heated executive parking
- Glenstar Connect Program

SUITE FEATURES

- New fully furnished and CAT-6 cabled spec suite
- 5 private offices with side lights and exterior views
- Glass front conference room seats 10
- Open kitchen/break
- 20 sit-stand workstations with dual monitor arms

