

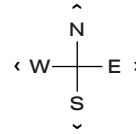
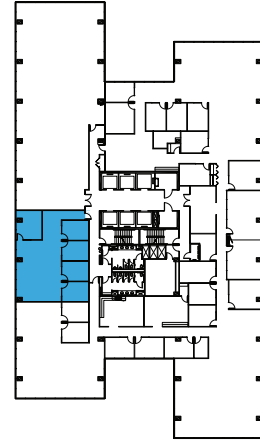
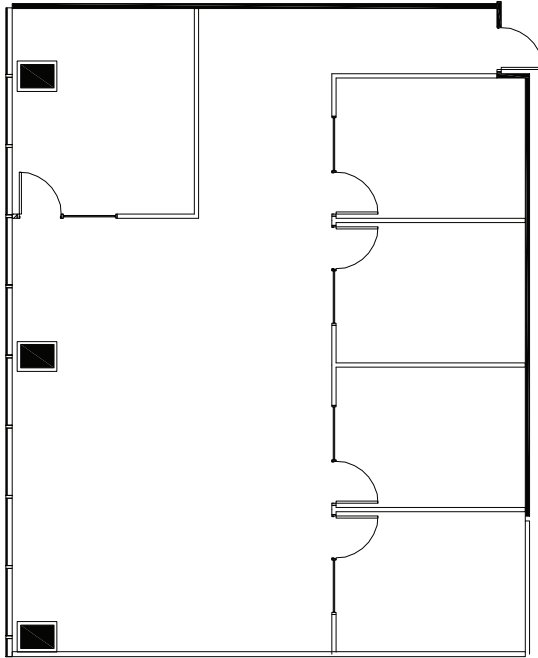


1475 WOODFIELD RD - SUITE 625

1,907 RSF

SCHAUMBURG CORPORATE CENTER

1475, 1501, 1515 E Woodfield Rd
Schaumburg, IL 60173



LEASING

Bill Saviski
Managing Director

bsaviski@glenstar.com
773 837 5290

—

Christian Domin
Managing Director

cdomin@glenstar.com
312 925 6304

SchaumburgCorporateCenter.com

PROPERTY HIGHLIGHTS

- Class A amenity package including 17,000 SF atrium
- Complimentary health club memberships
- Parking garage with connected pedway and heated executive parking
- Glenstar Connect Program

SUITE FEATURES

- Expandable to 6,993 RSF and elevator ID
- 4 private offices
- Conference
- Open area

