

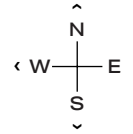
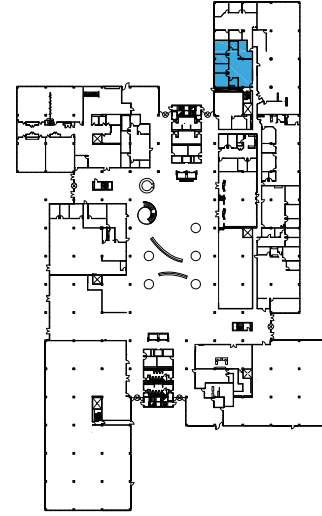
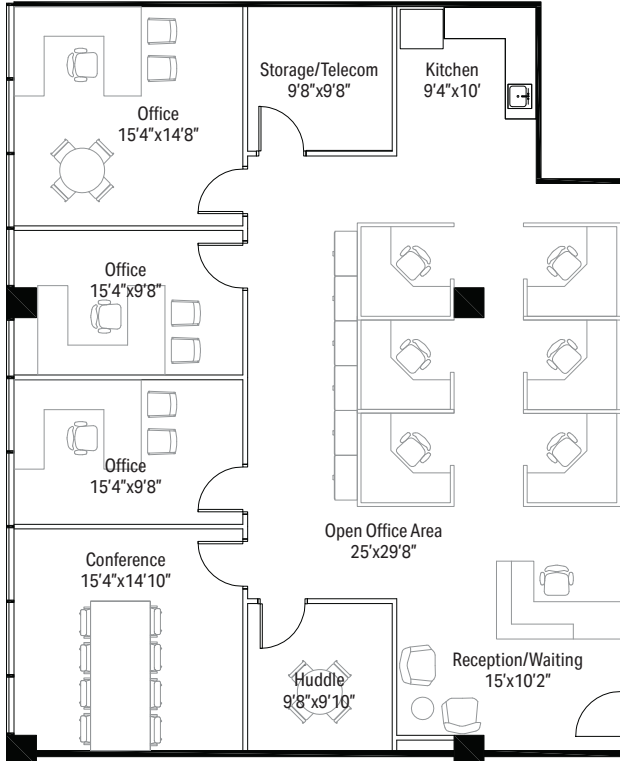


1501 WOODFIELD RD - SUITE 113E

# 2,313 RSF

**SCHAUMBURG CORPORATE CENTER**

1475, 1501, 1515 E Woodfield Rd  
Schaumburg, IL 60173



### LEASING

**Bill Saviski**  
**Managing Director**  
 bsaviski@glenstar.com  
 773 837 5290

—

**Christian Domin**  
**Managing Director**  
 cdomin@glenstar.com  
 312 925 6304

SchaumburgCorporateCenter.com

### PROPERTY HIGHLIGHTS

- Class A amenity package including 17,000 SF atrium
- Complimentary Midtown Athletic Club membership for tenants
- Parking garage with connected pedway and heated executive parking
- Glenstar Connect Program



### SUITE FEATURES

- New construction spec suite with CAT 6 cabling and new furniture
- Tremendous window line with views to the exterior
- 3 perimeter offices
- Open office area with 6 workstations
- 1 conference room and 1 huddle room
- Kitchen