

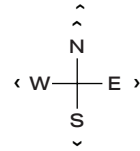
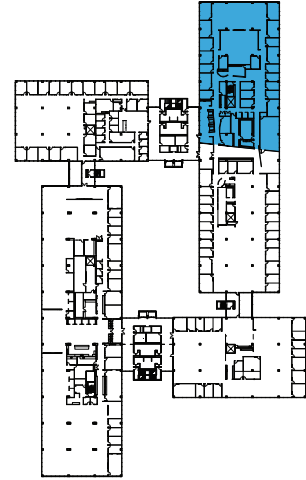
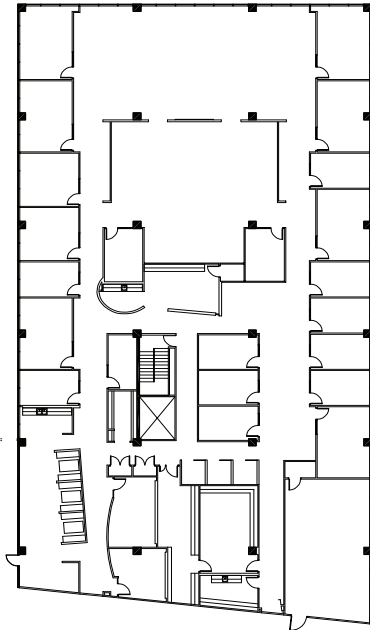


1501 WOODFIELD RD - SUITE 350E

# 16,727 RSF

**SCHAUMBURG CORPORATE CENTER**

1475, 1501, 1515 E Woodfield Rd  
Schaumburg, IL 60173



[VIRTUAL TOUR →](#)

### LEASING

**Bill Saviski**  
Managing Director  
bsaviski@glenstar.com  
773 837 5290

—

**Christian Domin**  
Managing Director  
cdomin@glenstar.com  
312 925 6304

SchaumburgCorporateCenter.com

### PROPERTY HIGHLIGHTS

- Class A amenity package including 17,000 SF atrium
- Complimentary health club memberships
- Parking garage with connected pedway and heated executive parking
- Glenstar Connect Program

### SUITE FEATURES

- Tremendous window line on 3 sides
- Multiple private offices with exterior views
- Multiple conference rooms and a boardroom
- Large open area for work stations
- Kitchen

