

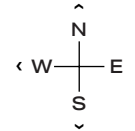
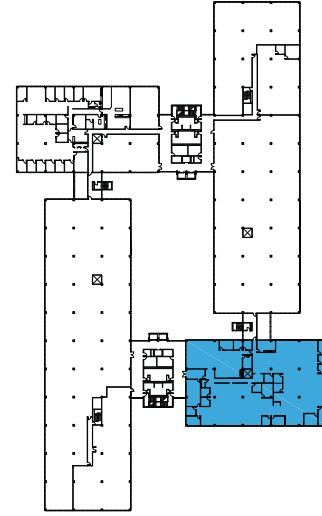
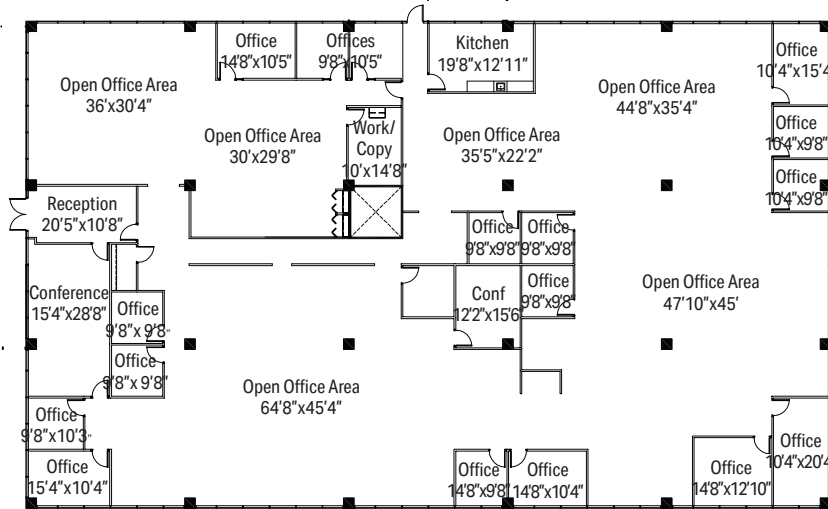


1501 WOODFIELD RD - SUITE 400S

# 16,087 RSF

**SCHAUMBURG CORPORATE CENTER**

1475, 1501, 1515 E Woodfield Rd  
Schaumburg, IL 60173



### LEASING

**Bill Saviski**  
**Managing Director**  
 bsaviski@glenstar.com  
 773 837 5290

**Christian Domin**  
**Managing Director**  
 cdomin@glenstar.com  
 312 925 6304

SchaumburgCorporateCenter.com

### PROPERTY HIGHLIGHTS

- Class A amenity package including 17,000 SF atrium
- Complimentary Midtown Athletic Club membership for tenants
- Parking garage with connected pedway and heated executive parking
- Glenstar Connect Program

### SUITE FEATURES

- Abundant window line
- 17 private offices, 12 perimeter
- Large open office areas for workstations
- 2 conference rooms
- Reception
- Telecom, work/copy room
- Kitchen/break room

