

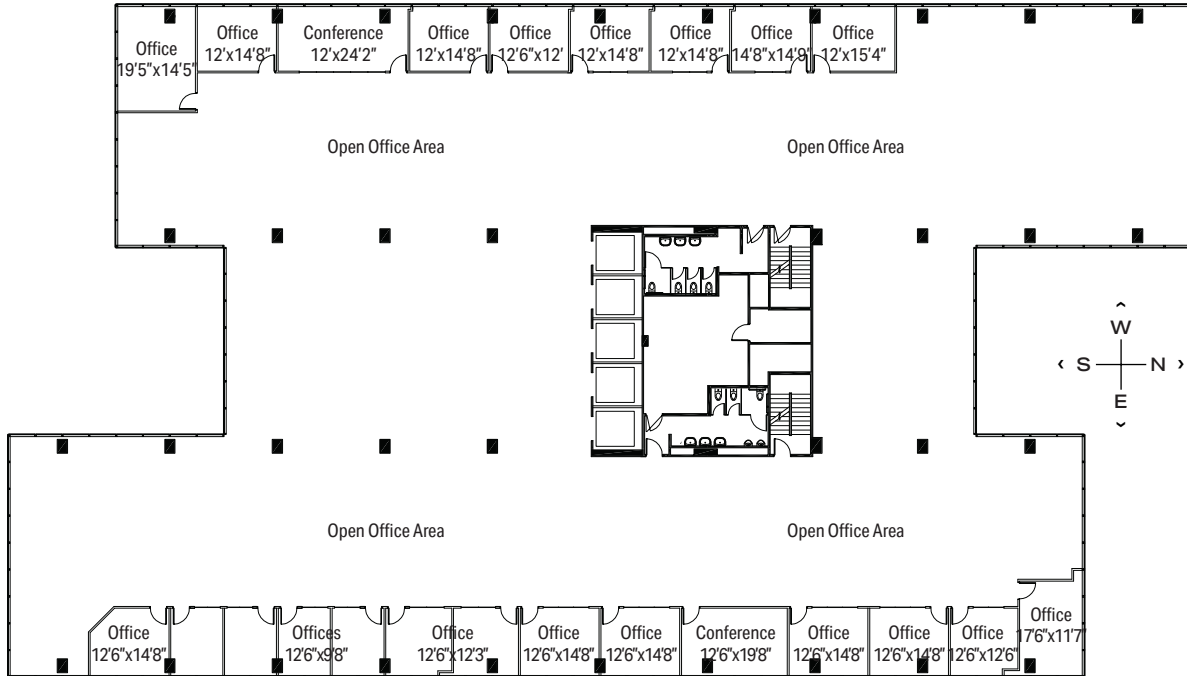


1515 WOODFIELD RD - SUITE 500

SCHAUMBURG CORPORATE CENTER

24,700 RSF

1475, 1501, 1515 E Woodfield Rd
Schaumburg, IL 60173



[VIRTUAL TOUR →](#)

LEASING

Bill Saviski
Managing Director
 bsaviski@glenstar.com
 773 837 5290

—

Christian Domin
Managing Director
 cdomin@glenstar.com
 312 925 6304

SchaumburgCorporateCenter.com

PROPERTY HIGHLIGHTS

- Class A amenity package including 17,000 SF atrium
- Complimentary Midtown Athletic Club membership for tenants
- Parking garage with connected pedway and heated executive parking
- Glenstar Connect Program

SUITE FEATURES

- Full floor white box suite
- Contiguous to full 4th floor totaling 49,400 RSF
- Abundant window line with exterior views on all sides
- 21 perimeter offices with exterior views
- 2 perimeter conference rooms
- Open office area for workstations

