

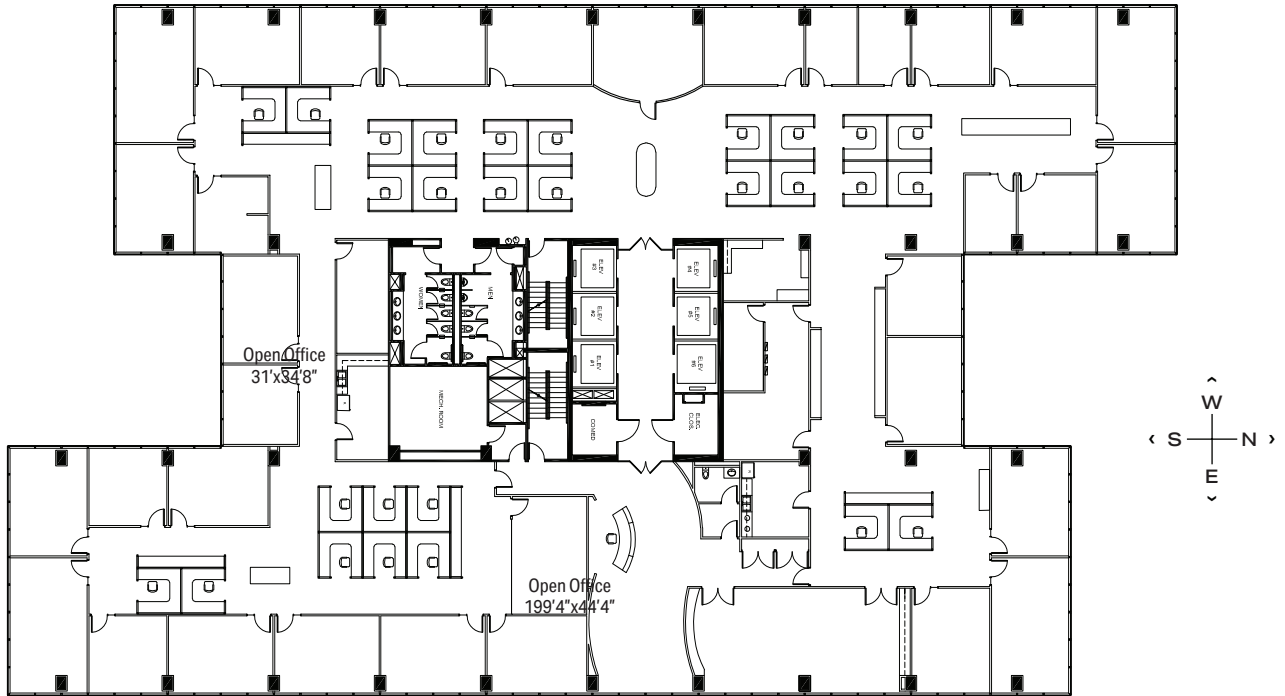


1475 WOODFIELD RD - SUITE 1400

24,700 RSF

SCHAUMBURG CORPORATE CENTER

1475, 1501, 1515 E Woodfield Rd
Schaumburg, IL 60173



LEASING

Bill Saviski
Managing Director
bsaviski@glenstar.com
773 837 5290

—

Christian Domin
Managing Director
cdomin@glenstar.com
312 925 6304

SchaumburgCorporateCenter.com

PROPERTY HIGHLIGHTS

- Class A amenity package including 17,000 SF atrium
- Complimentary health club memberships
- Parking garage with connected pedway and heated executive parking
- Glenstar Connect Program

SUITE FEATURES

- Top floor of the tower
- Headquarter/executive space
- Boardroom, 5 conference rooms
- 28 private offices along window line
- Open areas, 2 kitchens, copy/work room

