

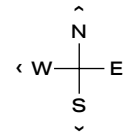
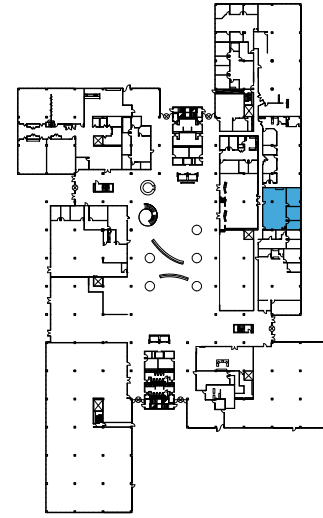
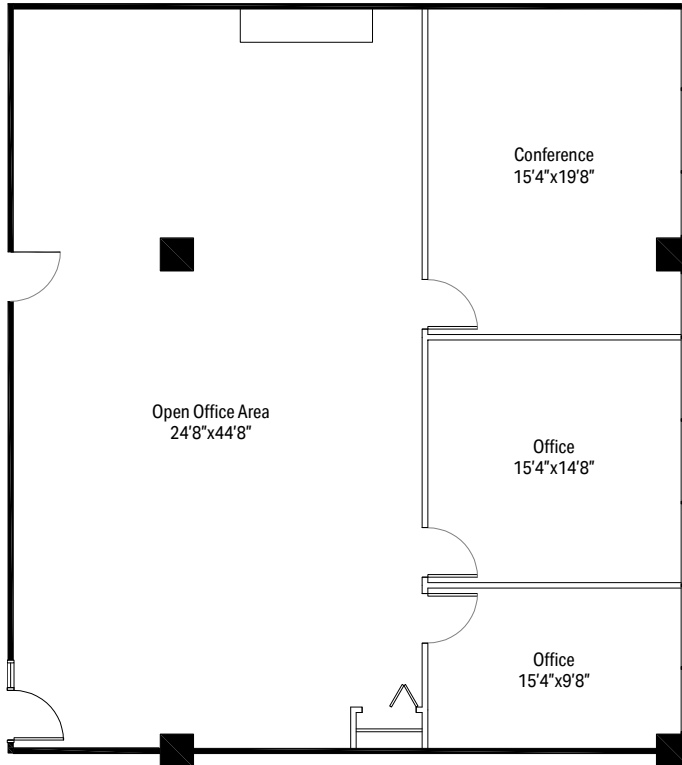


1501 WOODFIELD RD - SUITE 103E

# 2,135 RSF

**SCHAUMBURG CORPORATE CENTER**

1475, 1501, 1515 E Woodfield Rd  
Schaumburg, IL 60173



### LEASING

**Dave Trumpy**  
**Managing Director**  
 dtrumpy@glenstar.com  
 773.308.1031

—

**Bill Saviski**  
**Managing Director**  
 bsaviski@glenstar.com  
 773.837.5290

SchaumburgCorporateCenter.com

### PROPERTY HIGHLIGHTS

- Class A amenity package including 17,000 SF atrium
- Complimentary Midtown Athletic Club membership for tenants
- Parking garage with connected pedway and heated executive parking
- Glenstar Connect Program

### SUITE FEATURES

- 2 private offices with exterior views
- Open office area for workstations
- 1 conference room

