

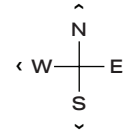
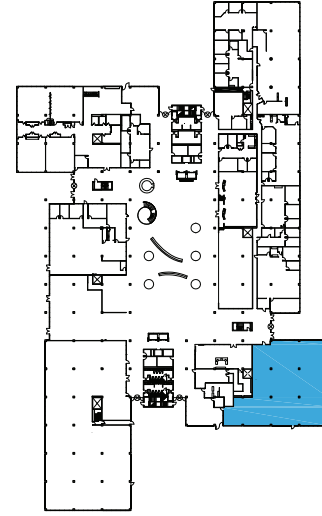
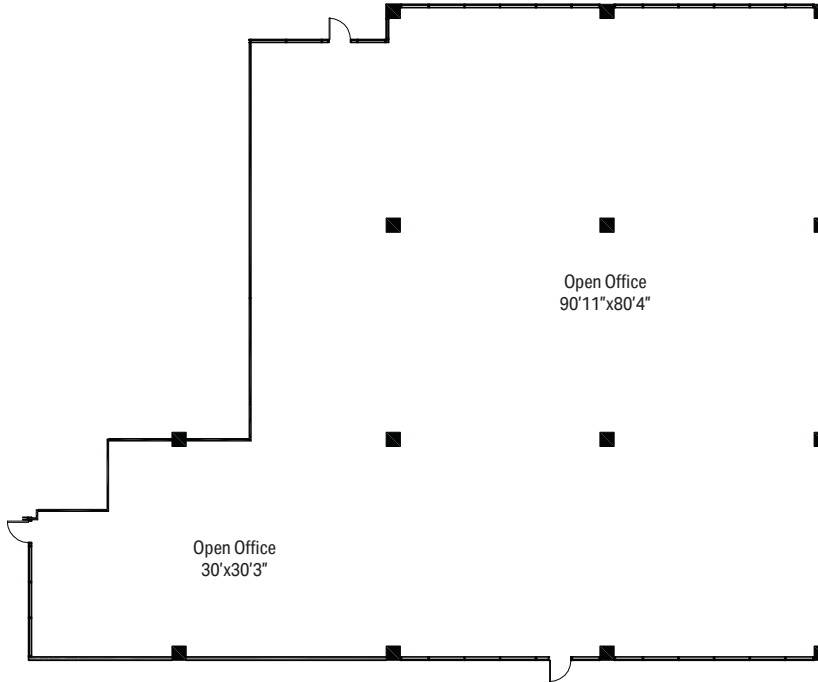


1501 WOODFIELD RD - SUITE 105S

# 9,518 RSF

**SCHAUMBURG CORPORATE CENTER**

1475, 1501, 1515 E Woodfield Rd  
Schaumburg, IL 60173



### LEASING

**Bill Saviski**  
Managing Director

bsaviski@glenstar.com  
773 837 5290

—

**Christian Domin**  
Managing Director

cdomin@glenstar.com  
312 925 6304

SchaumburgCorporateCenter.com

### PROPERTY HIGHLIGHTS

- Class A amenity package including 17,000 SF atrium
- Complimentary Midtown Athletic Club membership for tenants
- Parking garage with connected pedway and heated executive parking
- Glenstar Connect Program

### SUITE FEATURES

- Steps from indoor atrium and building amenities
- Open plan space with new ceiling grid and light fixtures in place
- Abundant window line with exterior views

