

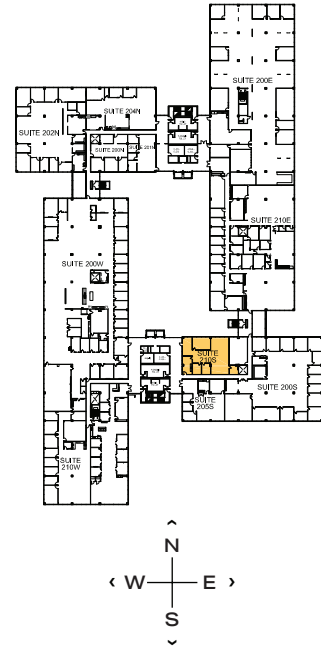
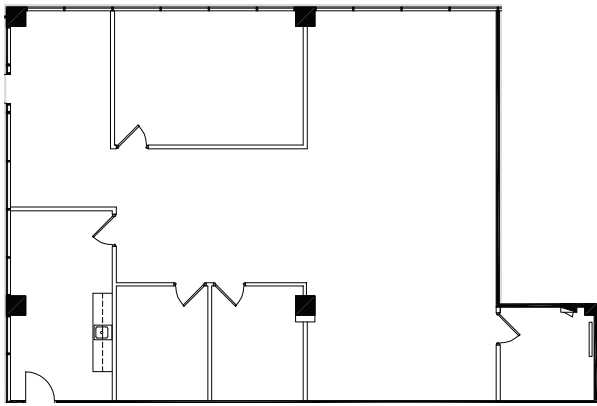


1501 WOODFIELD RD - SUITE 210S

# 2,555 RSF

**SCHAUMBURG CORPORATE CENTER**

1475, 1501, 1515 E Woodfield Rd  
Schaumburg, IL 60173



### LEASING

**Bill Saviski**  
Managing Director  
bsaviski@glenstar.com  
773 837 5290

—

**Christian Domin**  
Managing Director  
cdomin@glenstar.com  
312 925 6304

SchaumburgCorporateCenter.com

### PROPERTY HIGHLIGHTS

- Class A amenity package including 17,000 SF atrium
- Complimentary Midtown Athletic Club membership for tenants
- Parking garage with connected pedway and heated executive parking
- Glenstar Connect Program

### SUITE FEATURES

- Available 7/1/24
- Elevator ID and atrium exposure/views
- Two (2) private offices
- Conference overlooking atrium
- Open area for workstations
- Kitchen/break room

