

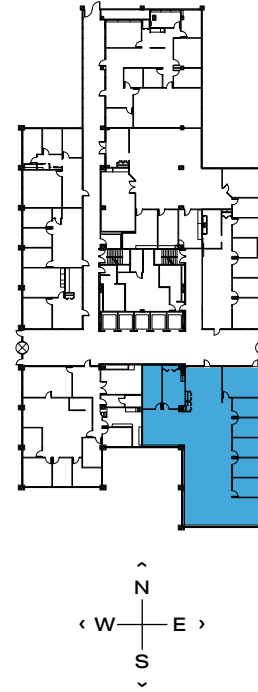
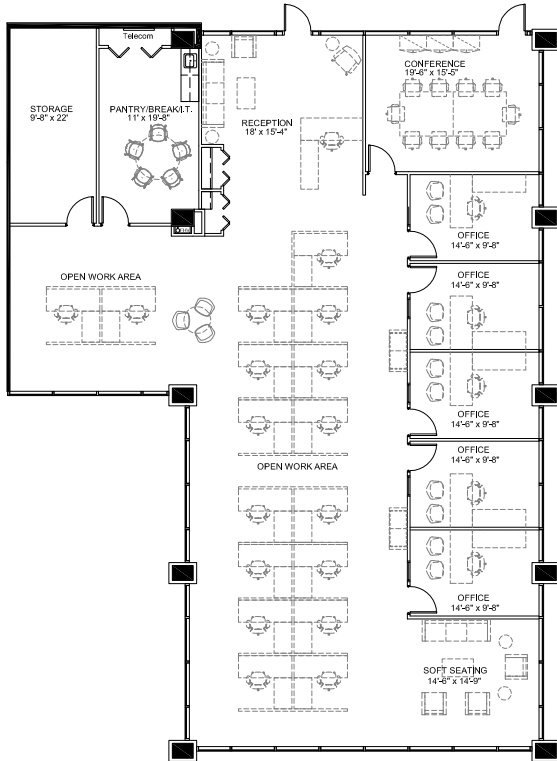


1515 WOODFIELD RD - SUITE 102

4,709 RSF

SCHAUMBURG CORPORATE CENTER

1475, 1501, 1515 E Woodfield Rd
Schaumburg, IL 60173



LEASING

Bill Saviski
Managing Director
 bsaviski@glenstar.com
 773 837 5290

—

Christian Domin
Managing Director
 cdomin@glenstar.com
 312 925 6304

SchaumburgCorporateCenter.com

PROPERTY HIGHLIGHTS

- Class A amenity package including 17,000 SF atrium
- Complimentary Midtown Athletic Club membership for tenants
- Parking garage with connected pedway and heated executive parking
- Glenstar Connect Program

SUITE FEATURES

- Furnished and CAT-6 cabled suite
- Main lobby ID
- 5 private offices, 17 workstations
- Conference room, kitchen, storage
- Windows on all sides
- Available 7/1/24

