

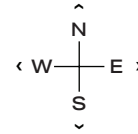
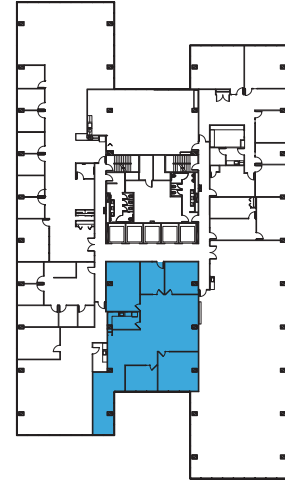
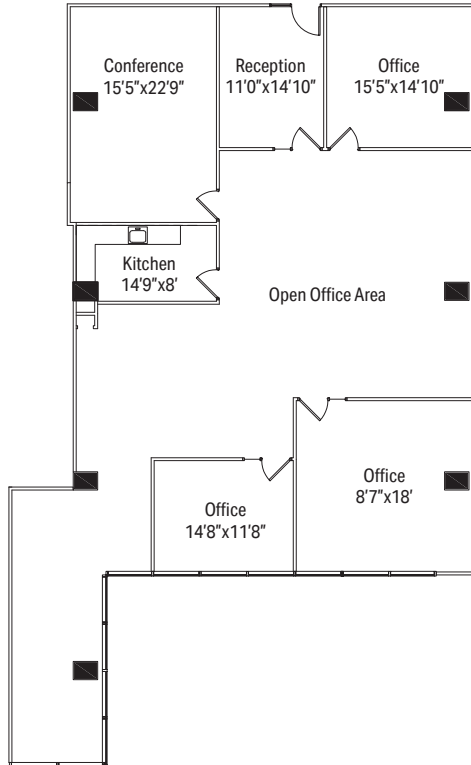


1515 WOODFIELD RD - SUITE 745

3,255 RSF

SCHAUMBURG CORPORATE CENTER

1475, 1501, 1515 E Woodfield Rd
Schaumburg, IL 60173



LEASING

Bill Saviski
Managing Director

bsaviski@glenstar.com
773 837 5290

—

Christian Domin
Managing Director

cdomin@glenstar.com
312 925 6304

SchaumburgCorporateCenter.com

PROPERTY HIGHLIGHTS

- Class A amenity package including 17,000 SF atrium
- Complimentary Midtown Athletic Club membership for tenants
- Parking garage with connected pedway and heated executive parking
- Glenstar Connect Program

SUITE FEATURES

- Prime elevator ID
- 3 private offices with exterior views
- Large open office area for workstations
- 1 conference room
- Reception area
- Kitchen

