

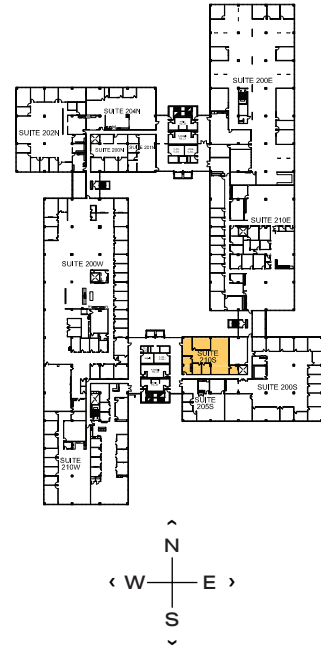
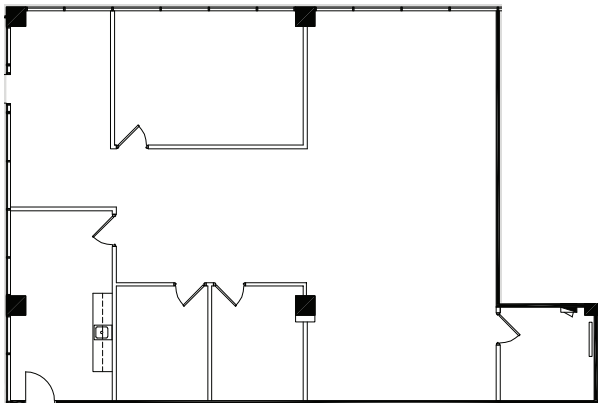


1501 WOODFIELD RD - SUITE 210S

2,555 RSF

SCHAUMBURG CORPORATE CENTER

1475, 1501, 1515 E Woodfield Rd
Schaumburg, IL 60173



LEASING

Bill Saviski
Managing Director
bsaviski@glenstar.com
773 837 5290

—

Christian Domin
Managing Director
cdomin@glenstar.com
312 925 6304

SchaumburgCorporateCenter.com

PROPERTY HIGHLIGHTS

- Class A amenity package including 17,000 SF atrium
- Complimentary health club memberships
- Parking garage with connected pedway and heated executive parking
- Glenstar Connect Program

SUITE FEATURES

- Available 7/1/24
- Elevator ID and atrium exposure/views
- Two (2) private offices
- Conference overlooking atrium
- Open area for workstations
- Kitchen/break room

