

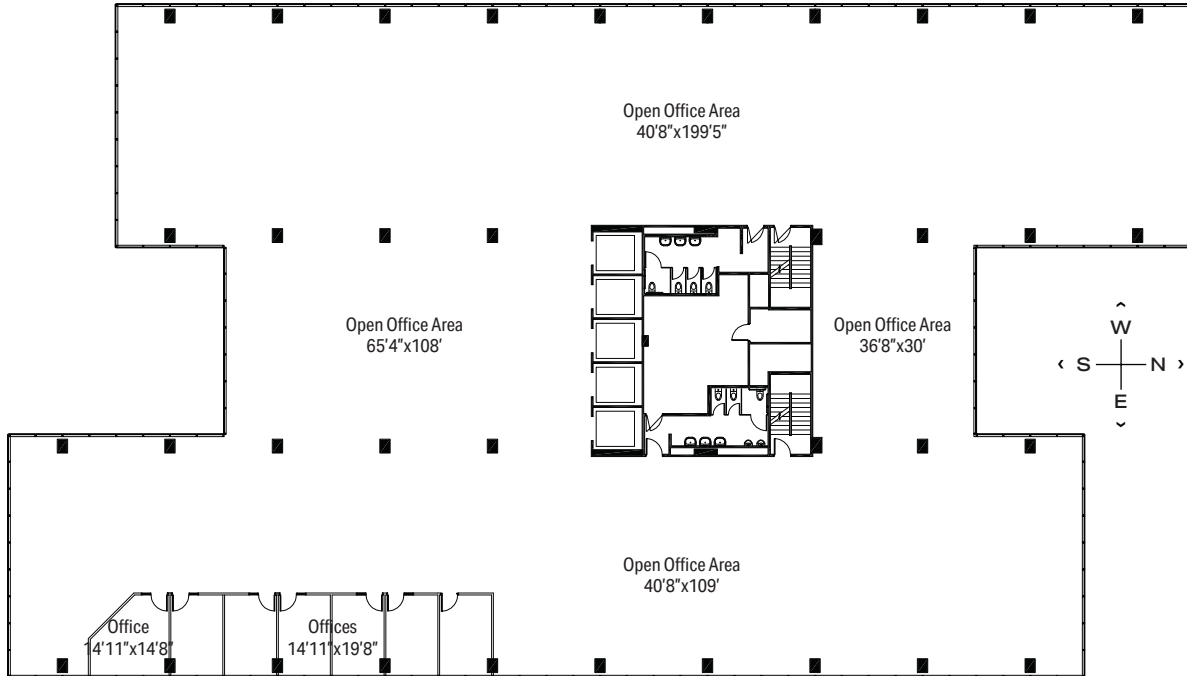


1515 WOODFIELD RD - SUITE 400

# 24,700 RSF

**SCHAUMBURG CORPORATE CENTER**

1475, 1501, 1515 E Woodfield Rd  
Schaumburg, IL 60173



[VIRTUAL TOUR →](#)

#### LEASING

**Bill Saviski**  
Managing Director  
bsaviski@glenstar.com  
773 837 5290

**Christian Domin**  
Managing Director  
cdomin@glenstar.com  
312 925 6304

[SchaumburgCorporateCenter.com](http://SchaumburgCorporateCenter.com)

#### PROPERTY HIGHLIGHTS

- Class A amenity package including 17,000 SF atrium
- Complimentary health club memberships
- Parking garage with connected pedway and heated executive parking
- Glenstar Connect Program

#### SUITE FEATURES

- Full floor white box suite
- Contiguous to full 5th floor totaling 49,400 RSF
- Abundant window line with exterior views on all sides
- 7 perimeter offices with exterior views
- Open office area for workstations

