

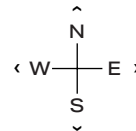
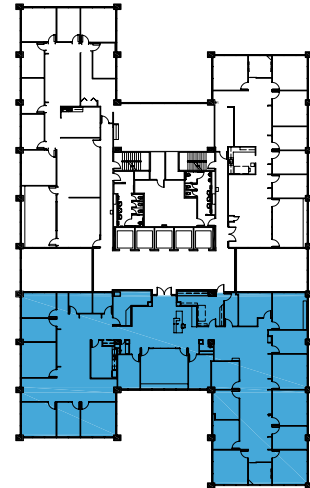
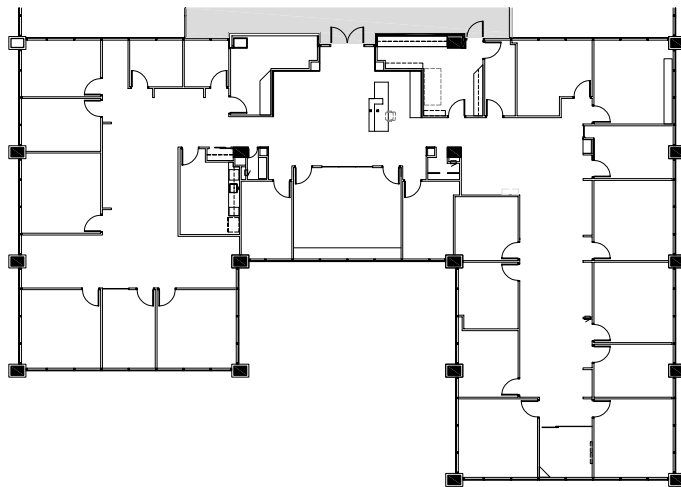


1515 WOODFIELD RD - SUITE 250

# 8,751 RSF

## SCHAUMBURG CORPORATE CENTER

1475, 1501, 1515 E Woodfield Rd  
Schaumburg, IL 60173



### LEASING

**Bill Saviski**  
Managing Director  
bsaviski@glenstar.com  
773 837 5290

—

**Christian Domin**  
Managing Director  
cdomin@glenstar.com  
312 925 6304

[SchaumburgCorporateCenter.com](http://SchaumburgCorporateCenter.com)

### PROPERTY HIGHLIGHTS

- Class A amenity package including 17,000 SF atrium
- Complimentary health club memberships
- Parking garage with connected pedway and heated executive parking
- Glenstar Connect Program

### SUITE FEATURES

- Elevator lobby ID
- Available 8/1/25
- All glass interior
- Multiple conference rooms and private offices
- Kitchen
- Work room



A GLENSTAR PROPERTY